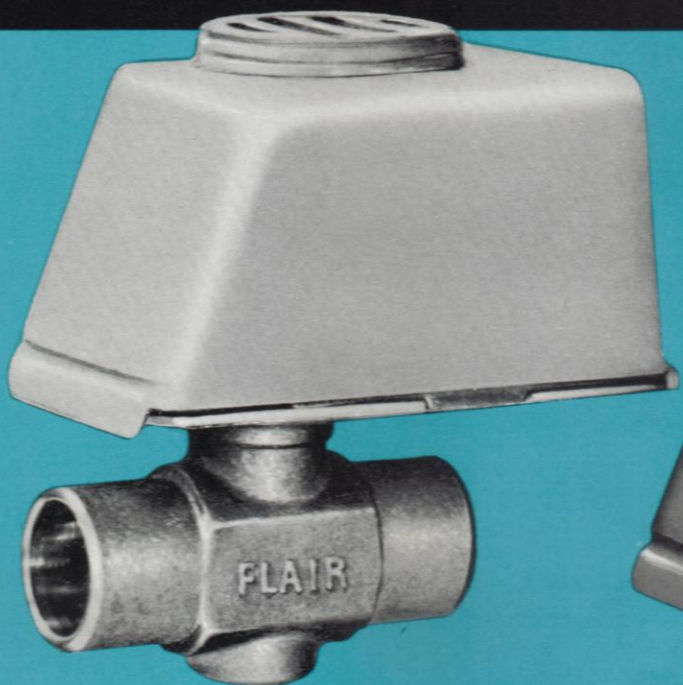


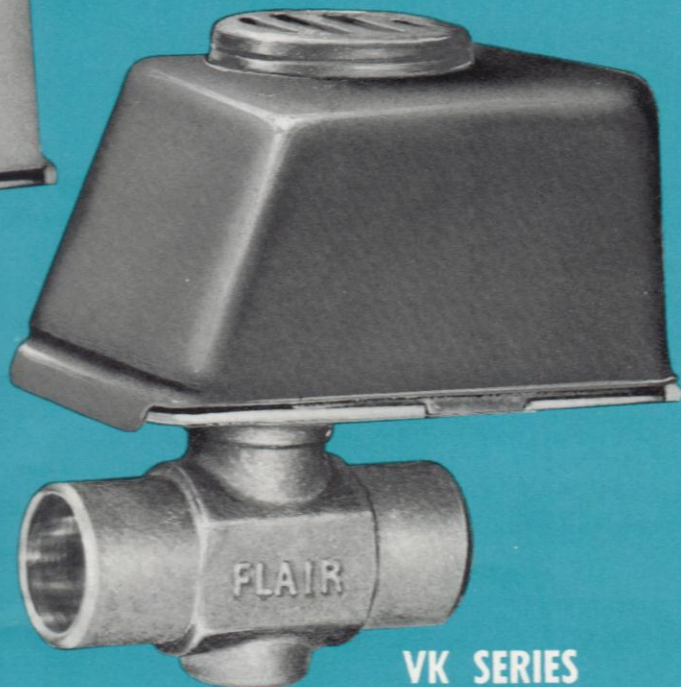
FLAIR
HEATING
EQUIPMENT



ZONE VALVES



VJ SERIES
RESIDENTIAL



VK SERIES
COMMERCIAL

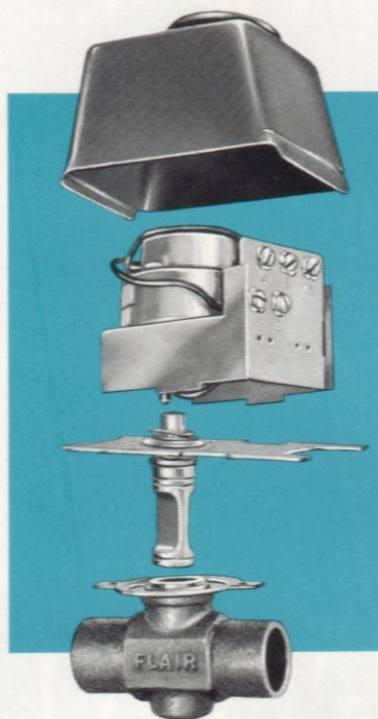
FEATURES

VJ SERIES

RESIDENTIAL
125 P.S.I.G.

*FOR INTERMITTENT
CIRCULATION*

2 or 3 wire operation.
Built in End-switch



VK SERIES

COMMERCIAL
125 P.S.I.G.

*FOR CONSTANT
CIRCULATION*

3 wire operation
only

TORTURE TESTED

Each zone valve is inspected, tested and approved at 52 different stations.

SILENT OPERATION

Powerful synchronous motors develop 5 in./lbs. of torque. 45 second operation completely eliminates pipe noises and water hammer.

POSITIVE SEAL

Triple "O" ring construction provides leak-proof operation at system pressures up to 125 P.S.I.G.

SELF-CLEANING STEM

An industrial hard chrome plate protects rotating stem against system dirt. Stem will operate with circulating pump differentials up to 92 ft/hd.

LOW CURRENT DRAW

Up to six (6) zone valves can be wired to one 40-VA Transformer.

TRIM STYLE DESIGN

Fits into baseboard cover without special enclosures. Body installs in either direction with same low restriction characteristics.

WAFER SWITCH

Self-cleaning contacts are unaffected by dust and dirt.

FULL LINE

Zone valves are made in 2 and 3 wire, commercial or residential, c x c or I.P.S., 1/2" to 1 1/4" in size, all operators are interchangeable.

Bell wire circuits for faster, more profitable installation.

Available with sweat or I.P.S. fittings.

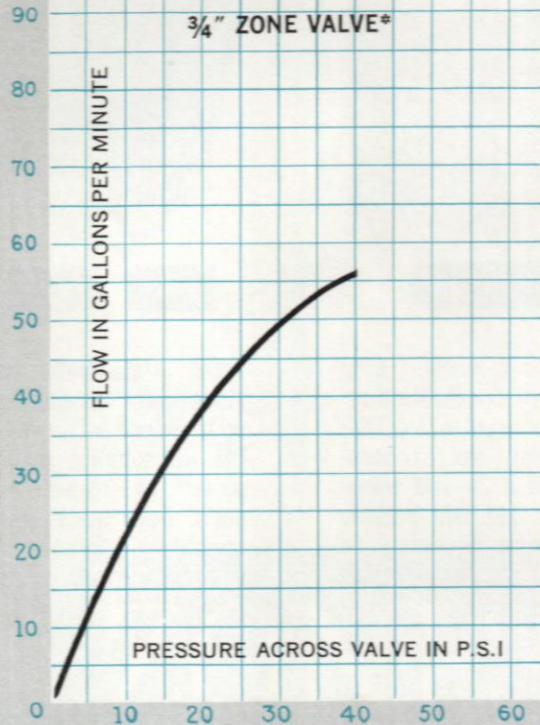
Compact design fits under baseboard cover with ease.

Styles for 2 or 3 wire operation.

SPECIFICATIONS

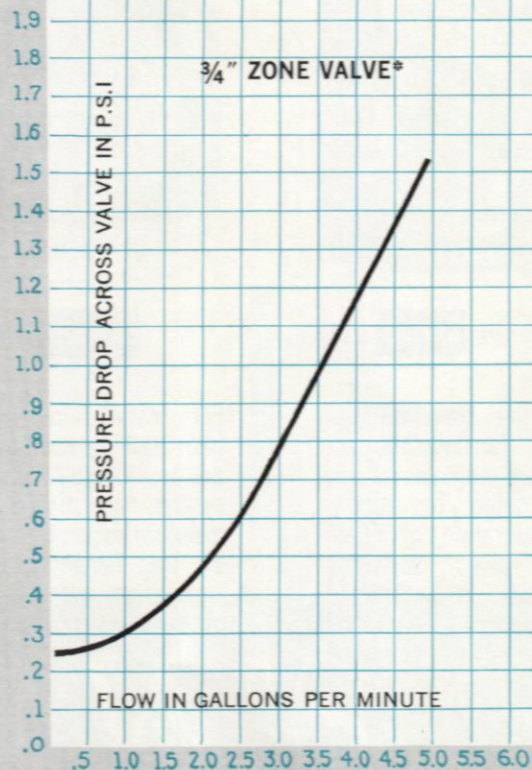
FLOW CHART

*WRITE FACTORY FOR INFORMATION ON ADDITIONAL SIZES



PRESSURE DROP

*WRITE FACTORY FOR INFORMATION ON ADDITIONAL SIZES



PRESSURE RATING

ALL ZONE VALVES — MAXIMUM SYSTEM PRESSURE 125 P.S.I.G.

MAXIMUM ALLOWABLE PRESSURE DIFFERENTIAL

(CIRCULATOR OR PUMP RUNNING)

1/2"	... 40 P.S.I.G. (92 FT/HD)
3/4"	... 40 P.S.I.G. (92 FT/HD)
1"	... 25 P.S.I.G. (58 FT/HD)
1 1/4"	... 15 P.S.I.G. (35 FT/HD)

ELECTRICAL RATINGS

2 WIRE SERIES
.30 AMPS AT 25 VOLTS AC

3 WIRE SERIES
.27 AMPS AT 25 VOLTS AC

END-SWITCH
(WHERE APPLICABLE)

.55 AMPS AT 25 VOLTS AC
LOW VOLTAGE ONLY

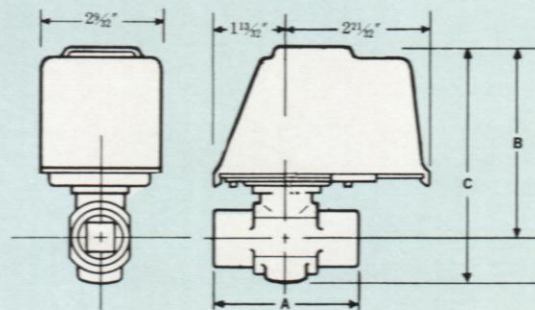
TIMING

ALL ZONE VALVES
45 SEC FULL OPEN
45 SEC FULL CLOSED

EQUIVALENT FEET OF PIPE

1/2"	... 1.4 FEET
3/4"	... 2.0 FEET
1"	... 2.5 FEET
1 1/4"	... 3.5 FEET

COMM'L	RESIDENTIAL		DIMENSIONS			
MODEL NUMBER			FOR SWEAT CONNECTION — CXC			
3 Wire only	2 Wire Series	3 Wire Series	Size	A	B	C
VK1B0	VJ1B2	VJ1B0	1/2"	2 7/8	3 21/32	4 17/32
VK1C0	VJ1C2	VJ1C0	3/4"	2 7/8	3 21/32	4 17/32
VK1D0	VJ1D2	VJ1D0	1"	3 1/8	3 21/32	4 23/32
VK1E0	VJ1E2	VJ1E0	1 1/4"	3 5/8	3 25/32	4 31/32
MODEL NUMBER			FOR THREADED CONNECTION — I.P.S.			
VK2C0	VJ2C2	VJ2C0	3/4"	2 7/8	3 21/32	4 17/32
VK2D0	VJ2D2	VJ2D0	1"	3 1/8	3 21/32	4 23/32



ALWAYS SPECIFY MODEL NUMBER WHEN ORDERING

gs.

Operate on either the supply or return side of the system and mount in any position.

thermostat control.

A complete line of matched accessories from a single source.

ACCESSORIES



APOV2 2 WIRE **ANOVO** 3 WIRE

Attractive, precision built FLAIR Thermostats are specially engineered and constructed to control the operation of FLAIR Zone Valves. Switching operation is unaffected by moisture or dust and it does not require leveling.



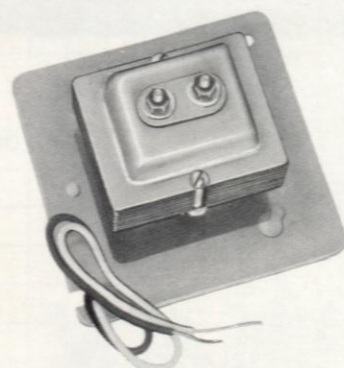
AROVO

For installations where both Heating and Cooling are provided by the same system, they provide and maintain accurate control of the temperature in each room whether the system is operating on either Heating or Cooling cycle.



RTU100B

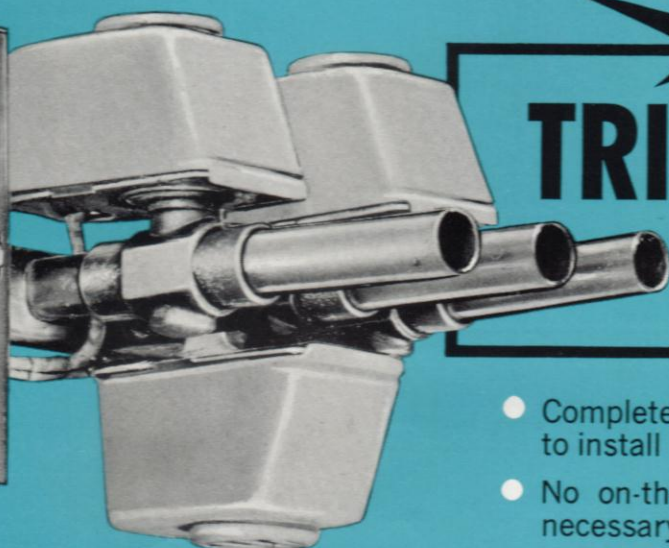
Provides a simple, easy to install combination relay (for controlling the circulator, and/or burner), and a 24 volt transformer that will provide the power necessary to operate up to 6 FLAIR Zone Valves.



PM20 **PM40**

PM-20 transformer provides power for operating up to 3 Zone-A-Trol Valves. PM-40 supplies enough power to operate six units. Both transformers are plate mounted for easy installation.

PACKAGED ZONING *with the*



FLAIR **TRIM-LINE PAC**

FOR ADDITIONAL INFORMATION
WRITE FOR BULLETIN B-1704

- Completely assembled and ready to install
- No on-the-job zone valve wiring necessary. Factory pre-wired
- From 2 to 6 zones with matching accessories
- No call backs
- Torture tested — electrically and hydrostatically



FLAIR MANUFACTURING CORP.
HAUPPAUGE, L. I. NEW YORK 11787 • 516-234-3600

BULLETIN No. A-1605
Supersedes No. A-1604