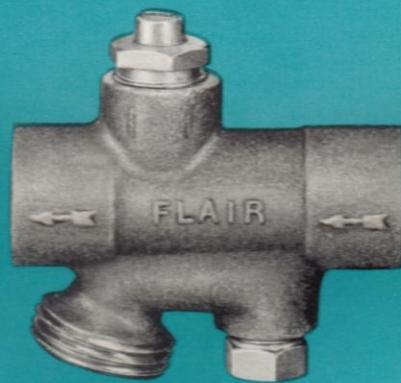


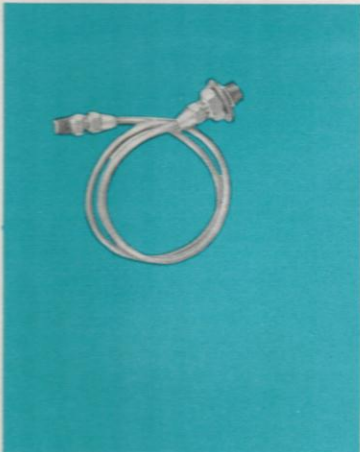
FLAIR
HEATING
EQUIPMENT



HYDRONIC VENTS
and accessories



HYDRONIC VENTS



No. 14 **No. 15**

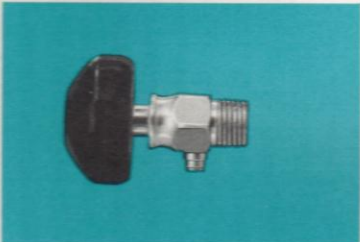
For remote venting of convectors or concealed radiators of hot water heating systems. The No. 14 has 15" of soft copper tubing — the No. 15 is 21" long. Recommended for installations where presence of leak sealing compounds or minerals in water make use of automatic valves undesirable.

- Manual venting — water stream is ejected outside of cover and may be caught in container.
- Large size hex with no projections to interfere with wrenching.
- Exterior parts nickel plated.
- Minimal projection into room.

SHIPPING WEIGHT PCS. PER CTN

No. 14 1½ lbs 6

No. 15 1¾ lbs 5



No. 16

A manual valve actuated by a wooden handle. Generally used on standing radiators. No key or tool required for operation.

½ lb 10



No. 17

The No. 17 is a high quality key air valve for hot water systems which gives minimal projection into living area. No. 19 is the key needed for its operation. No. 17 has a nickel plated finish.

No. 17 1 lb 36

No. 18

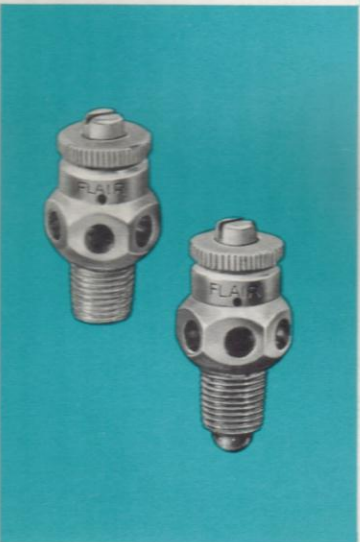
The No. 18 is a precision made hot water coin air valve similar to No. 17. It must be vented with a coin or screw driver. It has a nickel plated finish.

No. 18 1 lb 36

No. 19

Sturdy Die Cast Key to fit No. 17. It has a nickel plated finish.

No. 19 5 ozs 50



No. 20-0 **No. 20-1**

A fully automatic hot water valve designed to relieve air from forced circulation hot water heating systems. Install in a vertical position or any angle up to and including horizontal. Never install with vent screw pointing down.

- Fast venting — no initial manual venting required.
- Fast cycling — compare exposed washer area with any other valve.
- Slotted manual vent screw accepts coin or screwdriver.
- Bleeds manually from single port.
- Full size hex — no projections to interfere with wrench.
- Maximum working pressure — 50 p.s.i.g.

1½ lbs 12

NOTE No. 20-1 Has an Integral Check Valve which allows Hygroscopic washer replacement without draining system.

HYDRONIC VENTS

SHIPPING WEIGHT	PCS. PER CTN
3 ozs	1
3 ozs	1
4 ozs	1

No. 21 A

No. 21B

No. 21C

The 21 series hygroscopic vents are designed to give maximum air chamber space for convector installations. All No. 21 vents have silver brazed joints for long service life. Always install in a vertical position.

- Fast venting — no initial manual venting required.
- Directional port for easier manual venting.
- Large air collection chamber promotes rapid cycling.
- Individually factory tested at 60 p.s.i.g.
- May be used for breaking system vacuum.
- Maximum working pressure — 50 p.s.i.g.



2 ozs	1
-------	---

No. 22

Exclusively Flair's, the No. 22 is the industry's only silver brazed valve designed for baseboard. An oversized chamber keeps the automatic head above water surge caused by circulator. The No. 22 should be installed in vent tees and will fit under the cover of any fin tube baseboard now manufactured. Male 1/8" I.P.S. only. Install vertically.

- Largest baseboard vent chamber capacity.
- All joints silver brazed.
- Fast Venting — fast cycling.
- Manual Venting, when required, through single port.
- Factory tested at 60 p.s.i.g.
- Maximum working pressure — 50 p.s.i.g.



2 lbs	12
-------	----

No. 26A

No. 26B

A float type vent designed for continuous venting of hydronic heating / cooling systems. The number 26 is small enough to fit within all baseboard units. An instantaneous venting feature makes the #26 suitable for installation on mains or risers. Equipped with safe waste tapping & manual shut-off cap.

- Max. operating pressure 45 p.s.i.g.
- Test pressure 75 p.s.i.g.

For additional information see catalog sheet #B2301



We recommend

FLOAT VENTS (26A-26B)

- For use in systems with maximum 45 p.s.i.g. pressure.
- Use in problem, hard-to-vent areas.
- Use where safe-waste piping is required.

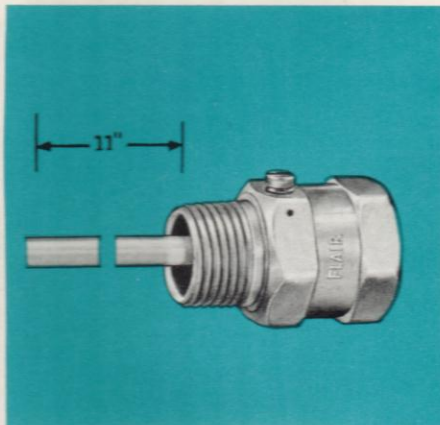
THE DISC SERIES (20, 21, 22) for general purpose use except—

- Do not use this series in systems with pressures above 50 p.s.i.g.
- Duration of service is limited in "hard" water areas or if boiler water chemicals or descaling compounds are present.

THE MANUAL SERIES (14, 15, 16, 17, 18) for pressures above 50 p.s.i.g. or

- If chemicals are present in water.
- Where extremely long service life is required.

HYDRONIC ACCESSORIES



No. 410 EXPANSION TANK DRAINER

The Flair No. 410 Expansion Tank Drain Adapter permits low cost rapid draining of expansion tanks. The unit consists of a sturdy tube soldered to a brass body which contains an air inlet and a tapping for installation of a standard drain valve. This adapter will enable the average tank to be recharged in a fraction of the time usually required. In old installations remove the drain valve, install No. 410, and replace valve into 1/2" tapping.

SHIPPING WEIGHT PCS. PER CTN.

1 1/2 lbs 1



No. 440 No. 441 No. 443 No. 444

BALANCING VALVES (CAST)

Balancing valves have cast bronze bodies with balancing spindle and bonnet turned from brass rod. Designed for 3/8", 1/2", 1" and 1 1/4" nominal size copper tubing systems, these valves offer the very minimum restriction to flow when open.

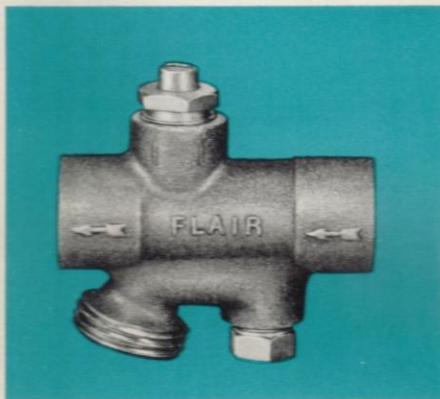
440	3/8"	6 3/8 lbs	36
441	1/2"	5 3/4 lbs	25
443	1"	1 lb	1
444	1 1/4"	1 1/4 lbs	1



No. 442 BALANCING VALVES (WROT)

This balancing fitting is precision made from brass rod. It will withstand pressures far in excess of those found on domestic heating systems. Size 3/4" nominal only

5 3/4 lbs 18



450-050 450-075 450-100 450-125

1/2" 3/4" 1" 1 1/4"

PURGE AND BALANCING VALVES

Designed to eliminate extra fittings and labor, the 450 series P & B valves are used for initial purging of a hydronic system. After the initial purge, the P & B valve can be used for adjustable balancing.

1/2"	13 1/2 lbs	24
3/4"	13 1/2 lbs	24
1"	3/4 lb	1
1 1/4"	7/8 lb	1



FLAIR MANUFACTURING CORP.
HAUPPAUGE, L. I. NEW YORK 11787 • 516-234-3600

DISTRIBUTED BY

LITHO IN U.S.A.

BULLETIN No. A-2202
Supersedes No. A-2201